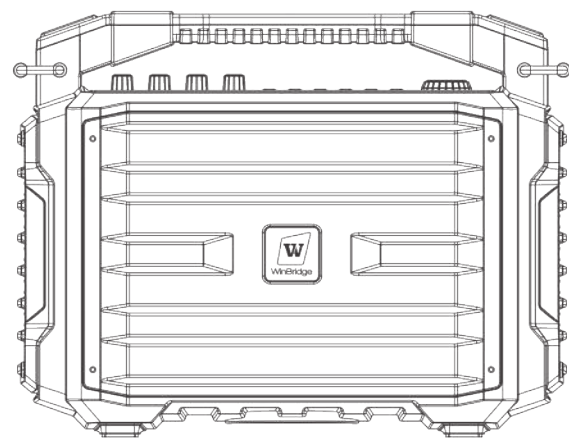




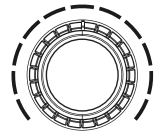
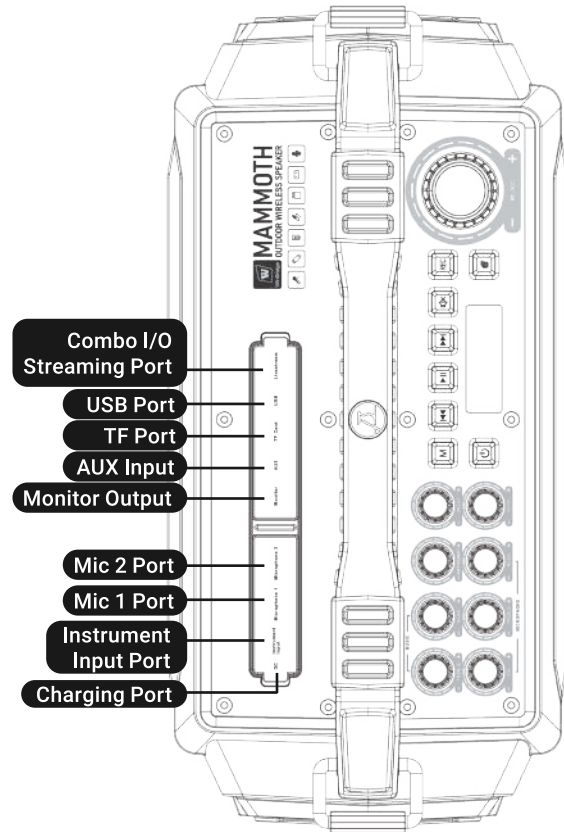
WinBridge

Multi-Function Outdoor Speaker System User Manual

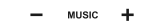


K600

K600 Function Illustration



Adjust music output volume: Rotate clockwise to increase volume, counterclockwise to decrease.



Press and hold to power on/off



Briefly press to switch mode among UHF, Bluetooth, AUX



Short press to select previous track; long press to fast rewind



Pause/Resume



Short press to skip to next track; long press to fast forward



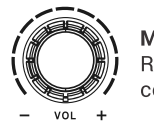
Short press to mute/unmute



Long press to start recording; short press to stop and playback



Music Mode: Tap to switch Indoor/Outdoor



Microphone output level control: Rotate clockwise to increase mic gain, counterclockwise to decrease.



Lower-row treble button controls mic high-frequency levels: Turn right to increase, left to decrease



Lower-row bass control adjusts mic low-frequency levels: Clockwise rotation increases, counterclockwise decreases.



Reverb level control: Rotate clockwise to increase echo level, counterclockwise to decrease.



Upper-row treble button controls music high-frequency levels: Turn right to increase, left to decrease



Upper-row bass control adjusts music low-frequency levels: Clockwise rotation increases, counterclockwise decreases.

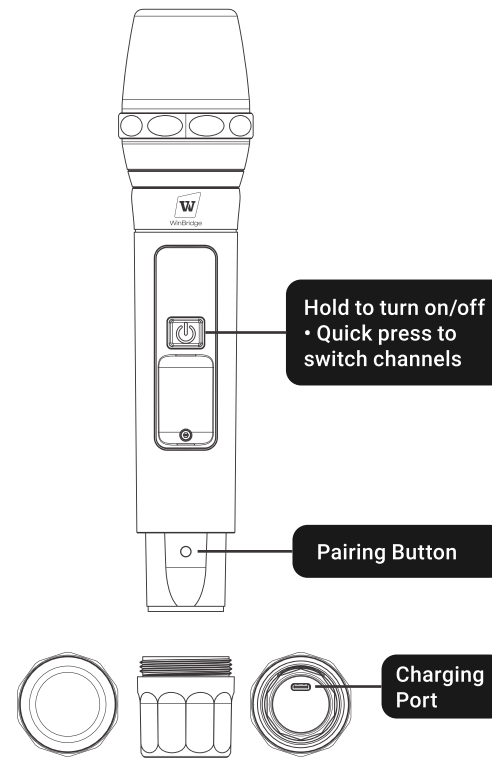


Adjust instrument output level: Clockwise rotation boosts signal, counterclockwise reduces



Delay Send Control: Rotate clockwise to increase effect level, counterclockwise to reduce

S15 Function Illustration



Manually Pairing Handheld Mic and Speaker

1. Turn on the K600 speaker, briefly press the **M** button to switch to **UHF mode**. You will hear the voice prompt: **"UHF mode"**.
2. Press and hold the **M** button for approximately 3 seconds until **"UHF"** starts blinking on the display, accompanied by the voice prompt **"UHF is waiting for pairing"**.
3. Power on the S15 handheld microphone. Rotate and open the bottom cover, then press and hold the pairing button until **"UHF"** stops blinking on the speaker display. You will hear **"UHF paired successfully"**.
4. After successful pairing, the microphone will output audio normally.

Bluetooth Pairing

1. Short press the **M** key on the speaker to switch to **Bluetooth mode**, the display screen will flash **"BLUE"** and simultaneously voice prompt **"Bluetooth Mode"**.
2. Open your Bluetooth device and search for **"K600"** in the list of available devices. Click to pair. When the pairing is successful, the **"BLUE"** stops flashing, and simultaneously voice prompt **"Bluetooth paired"**.

Note:

1. In Bluetooth mode, short pressing the speaker's **M** key will switch to other modes, and the Bluetooth connection will be disconnected.

2. To enable simultaneous use of the microphone (via UHF wireless transmission) and music playback (via Bluetooth connection), please follow these steps:
 - a. First, pair the microphone in **UHF mode**
 - b. After successful pairing, briefly press the **M** button to switch to **Bluetooth mode** and connect your playback device.

Note: If you connect the Bluetooth device first before pairing the microphone, the Bluetooth connection will be interrupted and both functions cannot be used simultaneously.

Short press **⏮** for previous track, long press does not support fast rewind.

Short press **⏭** for next track, long press does not support fast forward.

TF Card Mode

Insert a **TF card** to automatically play audio files. The display screen shows **"TF MP3"**.

Short press **⏮** for the previous track, long press **⏮** for fast rewind.

Short press **⏭** for the next track, long press **⏭** for fast forward.

FCC Warning

Any Changes or modifications not expressly approved by the party responsible for compliance could void the user's authority to operate the equipment. This device complies with part 15 of the FCC Rules. Operation is subject to the following two conditions:
(1) This device may not cause harmful interference
(2) this device must accept any interference received, including interference that may cause undesired operation.

Note

This equipment has been tested and found to comply with the limits for a Class B digital device, pursuant to part 15 of the FCC Rules. These limits are designed to provide reasonable protection against harmful interference in a residential installation. This equipment generates uses and can radiate radio frequency energy and, if not installed and used in accordance with the instructions, may cause harmful interference to radio communications. However, there is no guarantee that interference will not occur in a particular installation. If this equipment does cause harmful interference to radio or television reception, which can be determined by turning the equipment off and on, the user is encouraged to try to correct the interference by one or more of the following measures:
- Reorient or relocate the receiving antenna.
- Increase the separation between the equipment and receiver.
- Connect the equipment into an outlet on a circuit different from that to which the receiver is connected.
- Consult the dealer or an experienced radio/TV technician for help.
The device has been evaluated to meet general RF exposure requirement. The device can be used in portable condition without restriction.

Troubleshooting Guide

1. No Sound When Powered On

A: If the screen backlight is off → Low battery. Please recharge the device.

B: If the volume level shows minimum → Adjust the volume knob/buttons to increase output.

2. Audio Feedback (Howling/Squealing)

A: Re position the microphone capsule diagonally near the mouth corner (1-2 cm) and maintain 3+ meters/10ft between mic and speaker.

B: In smaller spaces, reduce volume to prevent acoustic oscillation.

If issues persist, contact WinBridge After-Sales Support

5. Genuine Parts Requirement

• All accessories are engineered for optimal performance.

• Use only manufacturer-approved replacements to ensure compatibility and safety.

6. Thermal Note

• Mild heating during charging/operation is normal and does not indicate malfunction.

7. Cleaning & Maintenance

• Power off and disconnect all cables before cleaning.

• Use anti-static microfiber cloths only.

8. Prohibited cleaners:

• Alcohol, benzene, or abrasive chemicals

9. Physical Protection:

• Never drop, step on, or disassemble the device.

• Unauthorized modifications void warranty coverage.

Package Includes

- 1* K600 Speaker
- 1* Charging Cable
- 2* Handheld Microphones
- 1* Strap
- 1* Black Aux Cable
- 1* Manual
- 1* 24V/2A Charger

User Guidelines

1. Optimal Microphone Placement

• For best vocal amplification, position the microphone capsule 1-2 cm diagonally from the corner of your mouth, pointing directly at the sound source.

• If feedback occurs, reduce volume slightly or increase the distance between the microphone and speaker to minimize interference.

2. Connection Handling

• Avoid frequent plugging/unplugging of the microphone jack to prevent loose connections and poor contact.

• Do not interchange microphone and audio source ports.

3. Battery Maintenance

• To maximize lithium battery lifespan: Fully discharge before recharging (avoid frequent partial charges).

• If unused for extended periods, recharge every 2 months to maintain battery health.

4. Magnetic Interference Warning

The speaker contains strong magnets. Keep away from:

• Credit cards

• Magnetic storage devices

• Other sensitive electronics

Risk: Demagnetization may cause data loss or device malfunction.

Speaking Charging Status

It takes approximately **4 hours** to fully charge with **DC 24V/2A charger**.

The battery indicator **lights flash while charging**, and the indicator lights stop flashing when fully charged.

Microphone Charging Status

It takes approximately **3.5 hours** to fully charge with **DC 5V/2A charger**.

The battery indicator **lights flash while charging**, and the indicator lights stop flashing when fully charged.

Specification

[Output Power] ≤ 200W

[Input Power] 24V/2A

[Speaker Battery] 8000mAh

[Speaker Working Time] 6-9H

[Speaker Charging Time] 4H

[Mic Battery] 1800mAh

[Mic Working Time] 13H

[Mic Charging Time] 3.5H

USB Drive Mode

Insert a **USB drive** to automatically play audio files. The display screen shows **"USB MP3"**.

Short press **⏮** for the previous track, long press **⏮** for fast rewind.

Short press **⏭** for the next track, long press **⏭** for fast forward.

To Enable Record Mode

1. Preparation

Ensure the K600 is powered on, then insert a USB storage device/TF card.

2. Storage Device Detection

When the device detects the storage medium, the front panel LED will briefly display "USB/TF".

3. Start Recording

While the LED displays "USB/TF", press and hold the REC button to enable recording mode.

Note: You must press and hold the REC button after inserting the storage device while "USB/TF" is displayed on the LED. Otherwise, recording will not activate.

4. Recording Status

Once recording is successfully activated, the LED display will show the elapsed recording time (minutes:seconds).

5. Play Recording

Press the REC button briefly to play recording.

6. Troubleshooting

If the device fails to enter recording mode, remove the USB/TF card and try again.



After-sale service

WinBridge provide one year warranty and lifetime technical support.

[Toll Free Hotline] +1 (833) 996-2881

[Email] info@winbridge.com

[Website] <https://www.winbridgestore.com>

Please be confident that seller support is just a mail away from you in case you find any difficulty, kindly do not hesitate to write back to us if you need any clarification or any kind of support.

